

arxada

WOOD PROTECTION
Products & Services



SOUTH AFRICA
Wood Protection Business Unit

A Leader in WOOD PROTECTION

We **Envision A World Built With Wood** that's enhanced with industry-leading technologies designed to extend the life of wood – the earth's most sustainable and versatile construction material.

For more than 80 years, Arxada's wood protection business has led the market in the delivery of trusted and innovative technologies. We are a long-time respected global supplier in the field of wood protection. We develop, manufacture and supply **tried, tested and trusted wood protection technologies** that make wood resistant to mould and moisture, insects and fungi while enhancing its natural beauty.

Trading as Arch Wood Protection (SA) (Pty) Ltd, we have pioneered and developed market focused wood protection technologies for South Africa and the wider African nations. With decades of experience, we understand how crucial it is that our customers' treatment facilities operate as effectively as possible. To help our customers achieve this, we offer a range of plant support and technical services that can be easily tailored to individual sites to ensure optimal efficiency and safe operation.

Products with PROVEN PERFORMANCE

Industrial Preservative Products



WOOD PRESERVATIVE



WOOD PRESERVATIVE



WOOD PRESERVATIVE



WOOD PRESERVATIVE

Mill Specialty Products



STAIN PROTECTION



INSECT PROTECTION

PART OF *something bigger*

As part of Arxada, we are something bigger. With unmatched expertise, Arxada is a leader in microbial control solutions covering hygiene, home care, personal care, paints and coatings, crop protection, material protection and wood protection.

Arxada has a global operating presence and has the widest range of bioactives and registrations worldwide, with over 100 countries served, 24 manufacturing facilities, 14 R&D centres, and over 3,600 colleagues.

arxada

over
100
countries
served

24
manufacturing
facilities

14
R&D
centres



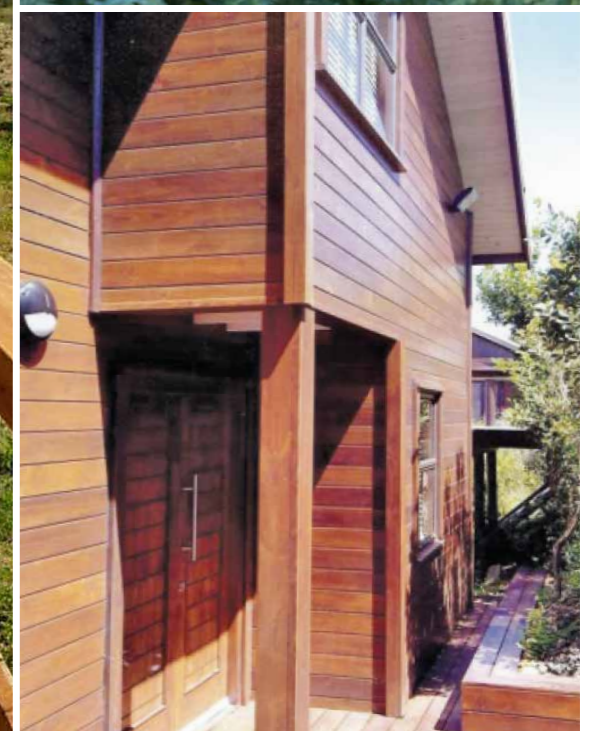
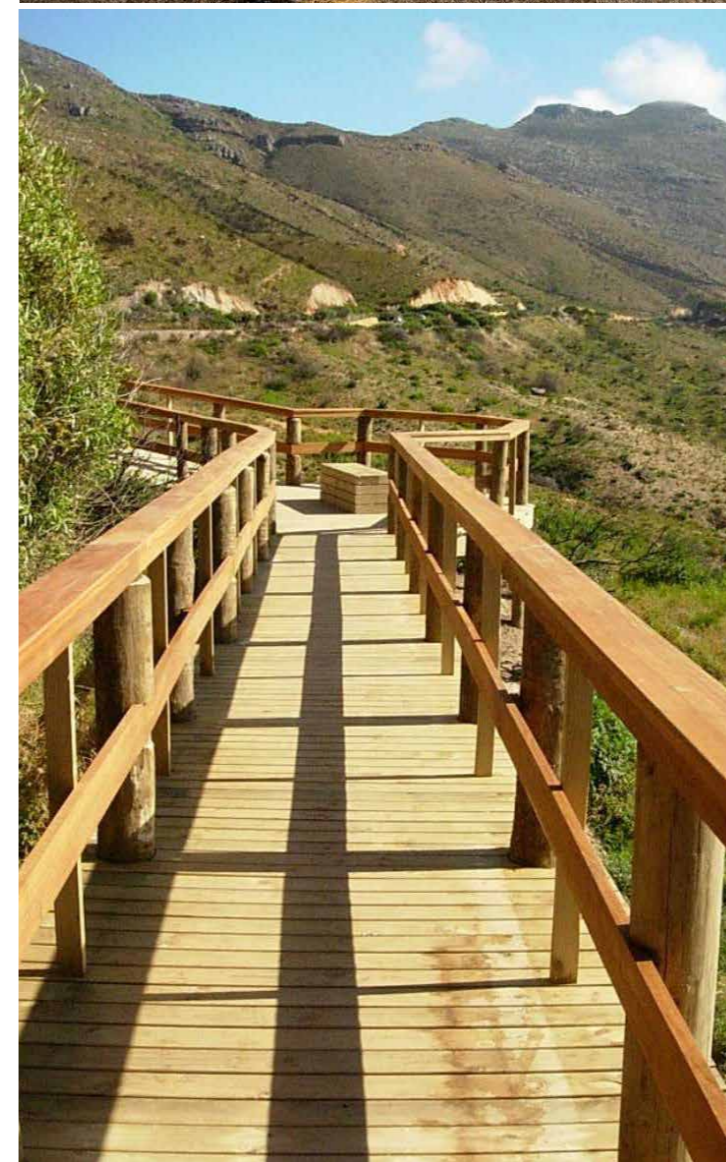
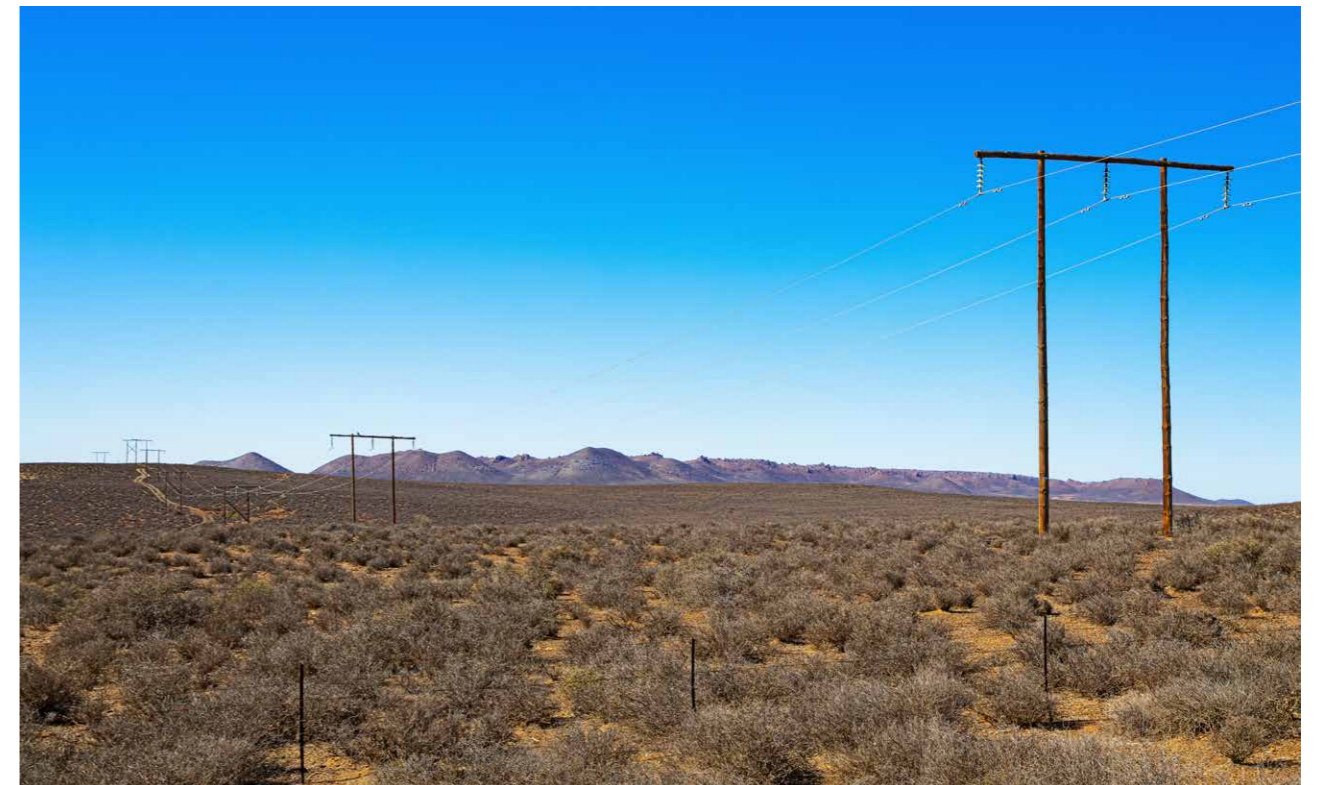


Tanalith® C is a high pressure, industrially applied wood preservative containing copper, chrome and arsenic. It has been relied upon for more than 60 years for the protection of timber against fungal decay, soft rots, insect borers, termites and marine borers in all hazard applications.

Hazard Classes refer to the levels of risk to which timber will be exposed to during its service life and specifies the concentration of wood preservative needed in the treatment process:

- **H2: Interior above the Ground**, e.g., roof trusses, purlins and battens, framing timber.
- **H3: Exterior above the Ground**, e.g., decking joists, bearers and decking boards, external cladding, garden furniture, balustrades, walkways, fence battens, trellises.
- **H4: Exterior in the Ground**, e.g., fence and agricultural posts, garden edging, pergolas, landscaping material, vineyard poles.
- **H5: Exterior in Fresh Water**, e.g., house piling, retaining walls, fresh water jetties, flood irrigated vineyards.
- **H6: Marine**, e.g., marine piling, slipways, timber in seawater (dual treatment with Tanalith® C and creosote).

are wide ranging from **roof trusses**, to **thatch roof** and **lapa poles**, to **walkways** and **decking**, **fencing**, **agricultural** and **vineyard posts**, **trellises** and **utility poles**.





A unique combination of copper and organic biocides, Tanalith® E was launched in Europe in 1992 as an alternative to traditional CCA high pressure wood preservative treatments.

It has decades of performance data to prove **long-term protection against wood decay and insect attack, including termites.**

When impregnated into the timber the preservative components bond with the wood structure and cannot be easily removed. Whilst Tanalith® C has been available across Africa for many years, we introduced Tanalith® E to ensure wood used in environmentally sensitive applications still has long-term protection.

Wood treated with Tanalith® E can be used across industrial, commercial and residential applications for both interior and exterior applications and in ground and out of ground contact. It can be used in Hazard Classes H2 (interior), H3 (exterior), H4 (in ground contact), and H5 (in contact with fresh water).

Tanalised® E timbers for exterior use can provide a desired service life of 50 years for H2 use, 25 years for H3 use and 15 years for H4 and H5 use.





Vacsol® Azure® is a low pressure, industrially applied wood preservative that provides an effective ‘envelope’ of long-term protection against fungal and insect attack around general building timbers and joinery components. The significance of this new generation preservative is that it is metal-free, which provides environmental advantages over its predecessor solvent based wood preservative products. In fact, Vacsol® Azure® was the first metal-free low pressure wood preservative to be launched in South Africa in 2012. Vacsol® Azure® pressure treated wood is third party verified under Global GreenTag’s McV certificate.

Wood treated with Vacsol® Azure® can be used in above ground, internal hazard applications (H2). It can also be used for some H3 applications when used in combination with an exterior protective coating.



Borolith® protects timber against fungal decay, soft rots, insect borers, termites and marine borers used in internal above ground applications of timber. It is for industrial use only and can be applied through either vacuum impregnation or a dip-diffusion process.

Timber treated with Borolith® is suitable for a number of applications including thatching poles, interior timber cladding and close human contact items.





Antiblu® 375 is an internationally accepted copper based **anti-sapstain** and **mouldicide** for the short-term protection of both saw logs and sawn timber from sapstain attack and mould.

It is suitable for industrial dip, spray or deluge treatment of timber.



SERVICES *that make the difference*

Product Supply

The majority of our products are manufactured in our own state-of-the-art facilities dedicated to producing high quality, in-specification products every time.

At our regional headquarters in Port Shepstone, our supply team personnel are ready to take and process your product orders and arrange appropriate deliveries either through professional chemical industry bulk delivery transport or in bulk containers (IBCs) and/or 25 litre drums. All products have appropriate regulatory and safety labelling in place.

Account Management

Every customer has a dedicated account manager. As well as being your main point of contact, your Account Manager will focus upon timber industry dynamics that relate to your business, helping to build successful long-term relationships.

Annual business reviews help develop your treatment business, ensure you are making the most of our proven support services, and ensure we have delivered on our promises to you.



Antiborer® is a water soluble **insecticide** for the short-to-medium term protection of freshly felled saw logs, sawn timber and hardwoods. It protects against wood borers and drywood termites during seasoning/air-drying.

Like Antiblu®, Antiborer can be applied via industrial dipping, spraying or deluge.





Engineering Support, Planning and Quality

Whether you require a complete new timber treatment operation or upgrades to existing treatment plants, our experienced in-house engineering team can provide full or part-time project management from initial design and approval stages, through to manufacturing, installation and commissioning.

We also have developed our own treatment plant operating system – **Tan-Treat®**. The Tan-Treat® system is an integrated electronic record keeping system that replaces the printed Charge Sheet, Receipt/Issue and Mixing and Stock Reconciliation books. Not only is the system secure and user-friendly, it also eliminates the risk of human calculation errors. After viewing the demo model, the South African Technical Auditing Service (SATAS) and the South African Bureau of Standards (SABS) added their endorsement to Tan-Treat® as an alternative to the current manual Charge Sheet system.



Tan-Treat®

Quality Support System

The benefits of using Tan-Treat®

- Simple to use, even by plant operators with limited computer skills.
- Removes the possibility of calculation errors by the operator as all the calculations are computed by Tan-Treat®.
- Seamless integration of the treatment quality books i.e. charge sheet, receipt/issue records, mixing records and stock reconciliation.
- Removes the need to have separate Charge Sheet books for each hazard class.
- All hazard classes are integrated into a single stock reconciliation.
- Quick recognition of treatment quality problems or incorrect data entry.
- A stock reconciliation for any period can be done merely by entering the start and end dates (no manual calculations required), allowing for instant trouble shooting. All reports are accessible and printable at the click of a button. Reports can also be exported as a PDF file, a MS Excel spreadsheet or as a MS Word document.
- It ensures data integrity as the Charge Sheet data cannot be manipulated by the plant operator once the Charge Sheet has been saved. This also applies to the Receipts, Mixing records and stock take data.
- Empowerment of the plant operators through the development of their computer literacy and skills.
- Multiple plants can be run on one program – can swop between plants through a simple log off / log in.
- Able to select between Tanalith® C or Tanalith® E.



On-site Operator Training

Our operator training program aims to both educate and empower treatment plant operators. It provides operators with the necessary tools to simply operate the plant as well as enable them to become self-sufficient in their roles within the business.

The training programme is divided into various levels and conducted one-on-one with the operator whilst on the job to minimize any disruption to the business production. These one-on-one sessions consist of both verbal explanation and verbal testing to ensure the operators understanding the comprehension of the module.

After each level is completed, the operator is required to undertake a written test which requires 80% pass rate.



Plant performance assessments

- Measure key plant parameters e.g. vacuum time, pressure time, empty time etc. Issue plant performance / service record spread sheets.
- Checking that loadings being achieved are appropriate to end use and market requirements.
- A Planned Preventative Maintenance Scheme is available at your discretion.
- Provides opportunity to discuss and tailor specific training needs.
- Essential maintenance checks and the provision of maintenance schedules and check sheets for the operators.
- Based on the site audits, look to arrange for key spares to be placed on stock.
- Site surveys / operational reviews
- Provide guidance for achievement of SANS standards. Assist in development of systems to maintain the above standard.
- Provide engineering and technical support for the treatment plant.
- Arxada Account manager to carry out initial product mixing. Product familiarity training on all products.

arxada

Working FOR YOU

16 Indus Road, Marburg, Port Shepstone,
PO Box 54344, Marburg, 4252, South Africa

T: +27 (0)39 682 6019

E: wood.sa@arxada.com

W: www.tanalised.co.za

Use wood preservatives safely. Always read the label and product information before use.

All product information corresponds to Arxada's knowledge on the subject at the date of publication, but Arxada makes no warranty as to its accuracy or completeness and Arxada assumes no obligation to update it. Product information is intended for use by recipients experienced and knowledgeable in the field, who are capable of and responsible for independently determining the suitability of ingredients for intended uses and to ensure their compliance with applicable law. Proper use of this information is the sole responsibility of the recipient. This information relates solely to the products as an industrially applied, wood preservative products. They may not be applicable, complete or suitable for the recipient's finished product or application; therefore republication of such information or related statements is prohibited. Information provided by Arxada is not intended and should not be construed as a license to operate under or a recommendation to infringe any patent or other intellectual property right.

No claims are made herein for any specific intermediate or end-use application. All trademarks belong to Arxada or its affiliates or to their respective third parties and are used here only for informational purposes. We review literature as and when necessary. Please ensure you have an up to date copy.

© 2023 Arxada